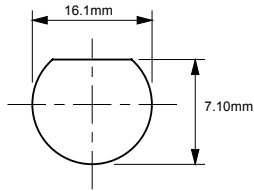


LOOM CONNECTOR



PANEL MOUNT CUT-OUT

WIRING LOOM

PIN	COLOUR	FUNCTION
1	BLACK & SHEILD	GROUND
2	RED	+BATTERY
3	BROWN (SMALL)	SPEED SIGNAL
4	GREEN	TRIGGER INPUT
5	NO CONNECTION	
6	YELLOW	OUTPUT 1
7	BROWN	OUTPUT 2
8	NO CONNECTION	

IMPORTANT NOTES:

Non compliance with this wiring diagram will impair Autoline operation and will negate the manufacturer's warranty.

Except when testing the unit the battery must remain disconnected during installation.

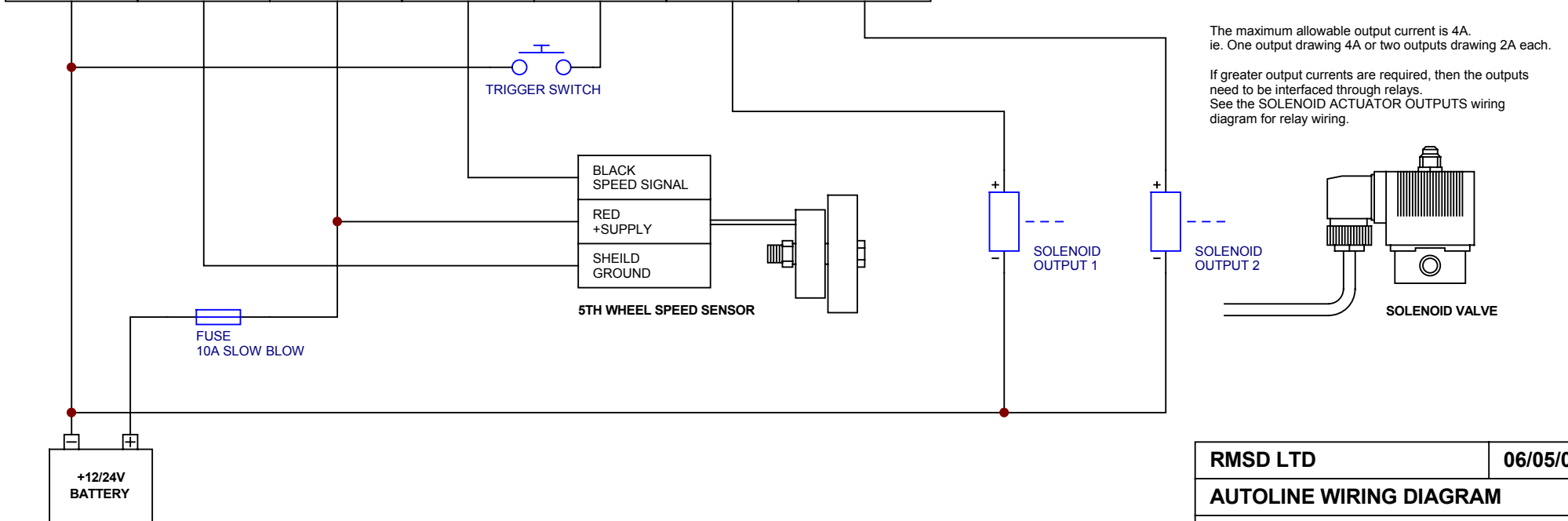
RECEIVE DATA and TRANSMIT DATA are not used. No connection should be made to these wires.

The Trigger Switch should be a normally open microswitch. The switch does not require a large current rating, as the typical current drawn through the switch is 5mA.

If the wires connecting the Autoline to the 5th Wheel Speed Sensor need to be extended ensure that the SPEED SIGNAL wire is shielded. The 5th Wheel Speed Sensor can be connected using the 3 way connectors supplied. Termination instructions are supplied with the connectors. Refer to installation guide for sensor mounting.

Mate the connectors from the Autoline and wiring loom. Wiring looms are available with either inline or panel mount connectors.

1 BLACK GROUND	1 SHEILD GROUND	2 RED +BATTERY	3 BROWN (SMALL) SPEED SIGNAL	4 GREEN TRIGGER INPUT	6 YELLOW OUTPUT 1	7 BROWN OUTPUT 2
----------------------	-----------------------	----------------------	------------------------------------	-----------------------------	-------------------------	------------------------



OUTPUT NOTES:

The maximum allowable output current is 4A. ie. One output drawing 4A or two outputs drawing 2A each.

If greater output currents are required, then the outputs need to be interfaced through relays. See the SOLENOID ACTUATOR OUTPUTS wiring diagram for relay wiring.

RMSD LTD	06/05/04
AUTOLINE WIRING DIAGRAM	
SOLENOID VALVE OUTPUTS	